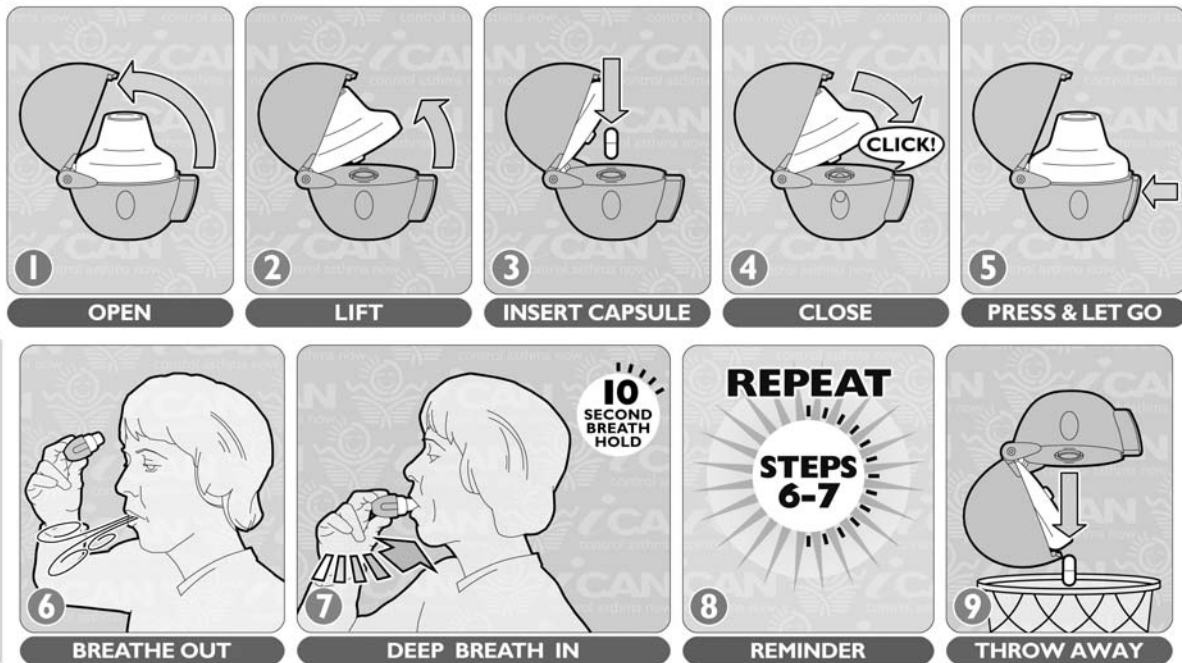


## DRY POWDER INHALER

### HANDIHALER



### Important Information

**Expired?:** Check the expiry date on the box or on the pack that holds the capsules.

- Reminders:**
- Keep the HandiHaler dry.
  - Do not breathe into the device.
  - Capsules are sensitive to light, moisture and extreme temperatures.
  - Make sure to remove only **ONE** capsule from the pack at a time.
  - Do not touch used capsules. If the dry powder gets on your hands, make sure you wash your hands thoroughly.

For more information on adult asthma and COPD visit our website at:  
[www.ucalgary.ca/asthma](http://www.ucalgary.ca/asthma)

## METERED DOSE INHALER (MDI)

### INHALER / "PUFFER" WITH SPACER & MOUTHPIECE



### Important Information

**Using an inhaler without a spacer is NOT recommended.**

**Spacers:** The chamber should be free from cracks. Replace missing or broken valves.  
**Whistle:** The whistle sound is a warning to SLOW your breathing.  
**Cleaning:** Soak in warm soapy water – do not rinse. Drip dry.

**Empty?:** Shake it. If it feels light or you do not feel liquid moving, it is empty and needs to be replaced. Throw it away.

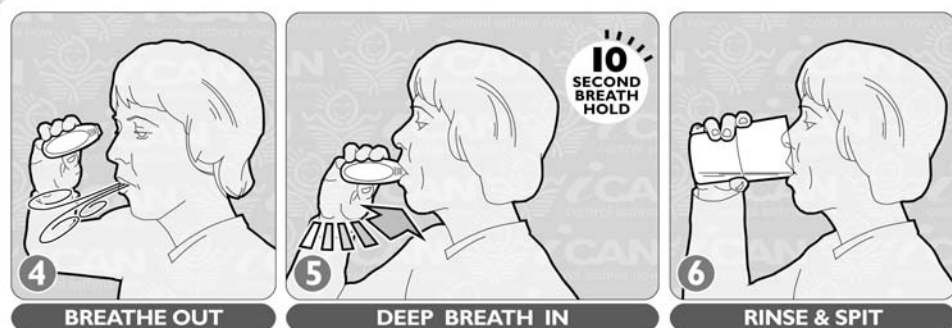
**Expired?:** Pull the metal canister out of the plastic sleeve to check the expiry date on the canister.

**Reminder:** Replace cap on plastic sleeve to store MDI.

For more information on adult asthma and COPD visit our website at:  
[www.ucalgary.ca/asthma](http://www.ucalgary.ca/asthma)

## DRY POWDER INHALER

### DISKUS



### Important Information

**Empty?:** The window has numbers that count down the dose – “0” means it is empty. Throw it away.

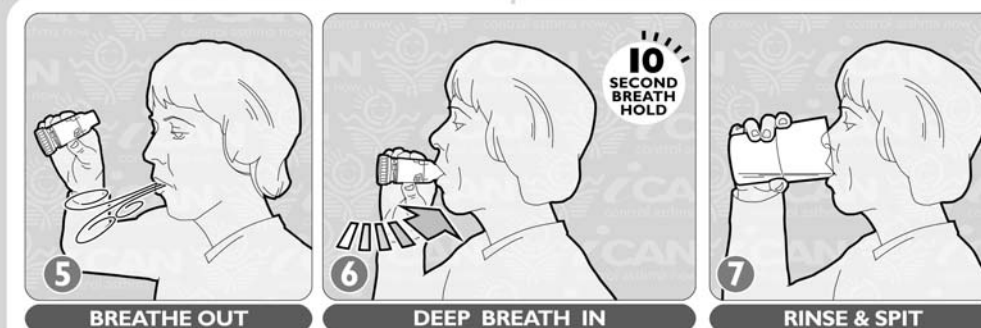
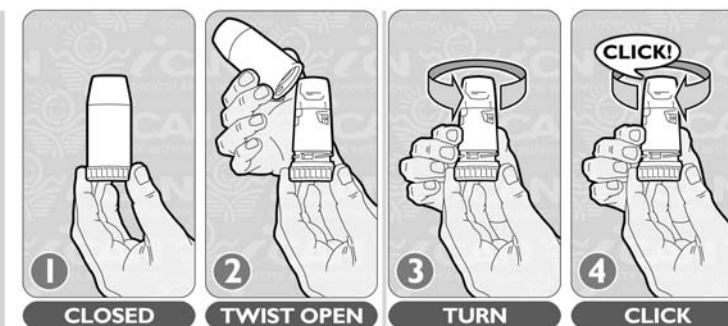
**Expired?:** Check the expiry date on the back of the device.

- Reminders:**
- Keep the Diskus dry.
  - Do not breathe into the device.
  - Close after use.

For more information on adult asthma and COPD visit our website at:  
[www.ucalgary.ca/asthma](http://www.ucalgary.ca/asthma)

## DRY POWDER INHALER

### TURBUHALER



### Important Information

**Empty?:** The window on the device starts to show red when there are 20 doses left. When the window is completely red, it is empty. Throw it away. The window on some devices has numbers that count down the dose - "0" means it is empty.

**Expired?:** Remove the cap to check the expiry date on the device.

- Reminders:**
- Keep the Turbuhaler dry.
  - Do not breathe into the device.
  - Replace the cap after use.
  - Some devices have a counter and can be checked daily.

For more information on adult asthma and COPD visit our website at:  
[www.ucalgary.ca/asthma](http://www.ucalgary.ca/asthma)